



Kristallo®

VIDEX

Design, elegance, high technology... are just some of the words that can shortly describe the VIDEX "high end" hands free line of intercoms and videophones: the **Kristallo®** Series.

Among the several features which are common to all **Kristallo®** models, here are the most important:

- "touch sensitive" technology (you can enter any function only lightly touching the corresponding symbol on the surface of the unit);
- "hands free" mode (after answering the call by pressing the answer button, it is possible to talk "hands free" without using the handset which will still be available, except in the 7" version, in all the other surface audio and video models for conventional use option);
- "privacy" service (this service allows to stop incoming calls so as the unit does not turn on)
- "additional service" (besides the "door open" service it is often necessary to use also an additional service such as "staircase light" or "driveway barrier");
- 3.5" or 7" OSD colour display which is available for video units only (the user can carry out programming or adjustments through the onscreen menu); temperature sensor and "real time" watch are used for possible future applications in domotic systems.
- memory board facility which will give the possibility to record on microsd card pictures and short videos (available in some models only);
- Integral temperature sensor and real time clock,
- IP version available to be used combined with Videx IP Door Entry Panels or with any Voip Switchboard compatible with SIP protocols.

Among the future features which will be added to the videophone range we can find: serial interface to use the units in domotic systems.

Intercoms and videophones from **Kristallo®** line are available for surface or flush mount, in /B black or /W white finishings.



Intercoms

Among all the common features of Kristallo® line intercoms we can find:

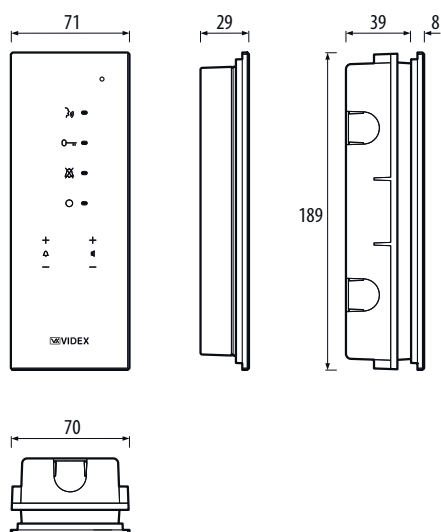
- An elegant and refined design;
- Touch sensitive technology buttons;
- Hands free mode available in both flush and surface with handset versions.

All models have 4 buttons for a specific function (such functions can vary depending on the operating mode of the intercom: stand-by, call or conversation modes) and 4 buttons programming and adjustment operations.

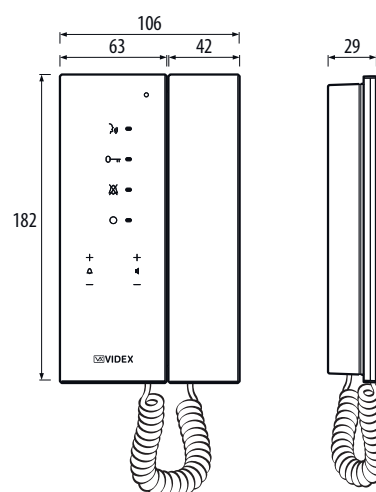
There are also 4 LED's which provide further indications about the intercom operation (services active, conversation, door open etc.)

Kristallo® intercom flush and surface (with handset) versions are available in the following finishes:

- White (/W)
- Black (/B)



*Hands free intercom
Flush and surface mount versions*



*Intercom with handset
Surface mount only*



Art. KRA78/W

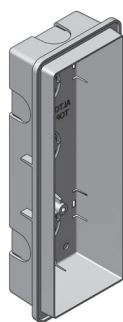


Art. KRA76/B

Art. INTERCOMS FOR VX2200 DIGITAL SYSTEM

KRA78 Flush mount hands free audio intercom. All buttons use capacitive touch sensor technology, 4 of these buttons have multiple direct functions such as "answer/end conversation/recall/simplex conversation", "door open", "privacy/call reject/programming menu access" (programmable duration) and "service" button. 3 LED's give visual indication of operations while the other 5 buttons allow navigation of the programming menu's and the setting of volumes. It is possible to program the melody (9 available), the number of rings (max 9) and the privacy service duration (max 20 hours). Also includes a local bell function. Available in black (add to the product code "/B") or white (add to the product code "/W") finishes.

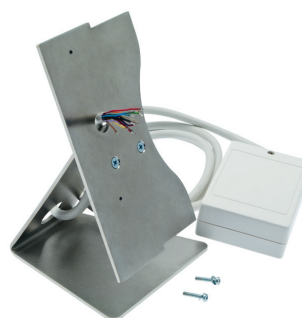
KRA76 As Art.KRA78 but surface mount version with telephone handset.



Art. KRA981



Art. KRA983



Art. KRA038

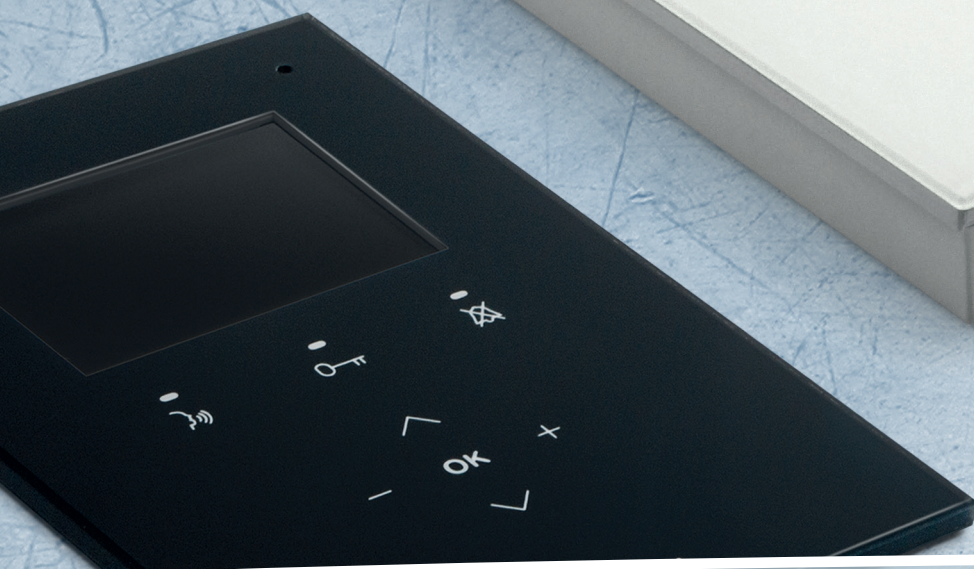
STAINLESS STEEL

Art. ACCESSORY KRISTALLO INTERCOMS

KRA981 Wall flush mounting box for Kristallo® Series intercoms flush mounting version.

KRA983 Dry line wall flush mounting box for Kristallo® Series intercoms flush mounting version.

KRA038 Table top desk kit for surface mounting version intercoms Kristallo® Series.
It's made in 3 mm brushed stainless steel.
Dimensions: 116 X 183 X 120 mm.



Among all the common features of Kristallo® line videophones we can find:

- An elegant and refined design;
- Touch sensitive technology buttons;
- Hands free mode available in both flush and surface with handset versions;
- 3.5" or 7" LCD TFT colour display with OSD (ON SCREEN DISPLAY)
- IP version available to be used combined with Videx IP Door Entry Panels or with any Voip Switchboard compatible with SIP protocols

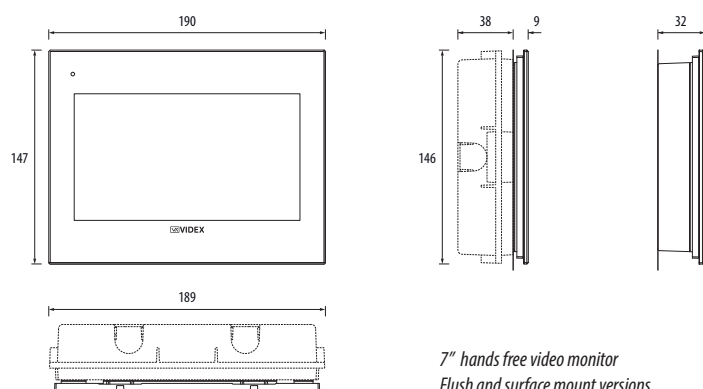
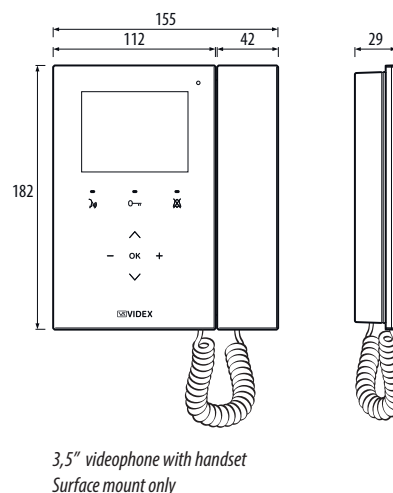
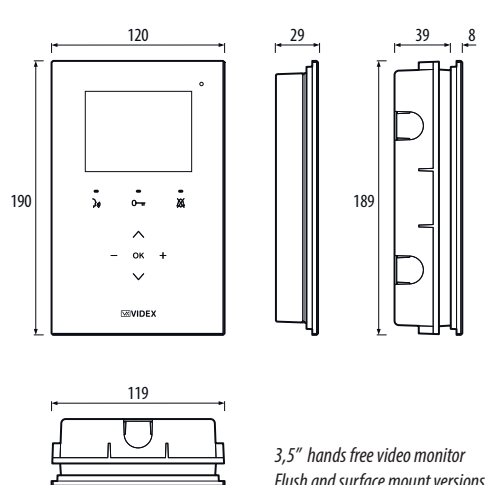
All models have 3 buttons for a specific function (such functions can vary depending on the operating mode of the videophone: stand-by, call or conversation modes) and 5 buttons programming and adjustment operations.

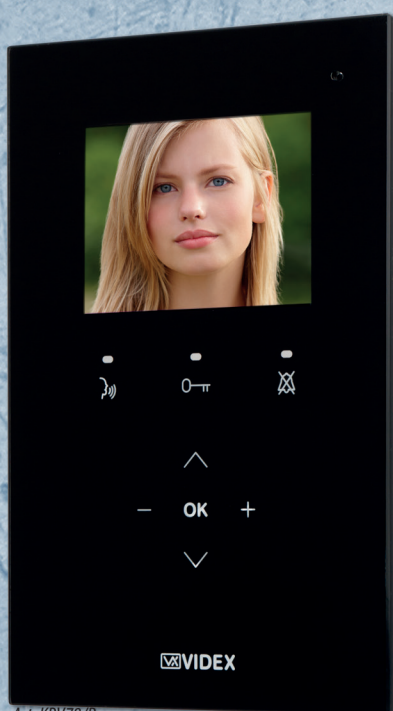
The OSD allows to visualize on the screen the environment temperature, date & time, any message concerning the system operation and it also allows to carry out programming and adjustments through a simple screen menu.

In addition to the OSD messages, there are also 3 LED's which provide further indications about the videophone operation (privacy active, conversation, door open etc.)

Kristallo® videophone flush and surface (with handset) versions are available in the following finishes:

- White (/W)
- Black (/B)





Art. KRV78/B
Art. KRV88/B
Art. KRV98/B



Art. KRV76/W
Art. KRV86/W
Art. KRV96/W

Art. 3.5" VIDEOPHONES FOR VX2200 DIGITAL SYSTEM

KRV78 Flush mount hands free video monitor using 3.5" full colour active matrix LCD display with OSD (On Screen Display) for video door entry systems using composite (coax cable) or balanced (twisted pair) video signal. All buttons use capacitive touch sensor technology, 3 of these buttons have multiple direct functions such as "door-open/concierge-call", "answer/camera recall/simplex conversation" and "privacy/call reject/service/programming and adjustment menu access"). 3 LED's give visual indication of operations while the other 5 buttons allow navigation of the programming menu's.

Programmable options: loudspeaker volume, call tone volume, picture contrast, brightness and hue, privacy duration, call tone melody, number of rings, address and video mode. Also includes a local bell function. Available in black (add to the product code "/B") or white (add to the product code "/W") finishes.

KRV76 As Art. KRV78 but surface mounting version with handset for conventional use in addition to the hands free mode.

Art. 3.5" VIDEOPHONES FOR VIDEX "2 WIRE BUS" VIDEOKITS AND VX2300 DIGITAL SYSTEMS

KRV88 Flush mount intelligent Hands free video monitor for the VX2300 digital system using 3.5" OSD full colour active matrix LCD monitor, with touch sensitive buttons for "door open / service", "answer/camera recall", "privacy/bus relay" plus 5 navigation menu buttons and 3 LED's related to the videophone operation. Additional features include a real time clock, a temperature sensor and a serial RS232 port for future integration with home automation systems.

KRV86 As Art. KRV88 but surface mounting version with handset for conventional use in addition to the hands free mode.

KRISTALLO VIDEOPHONES WITH MEMORY BOARD

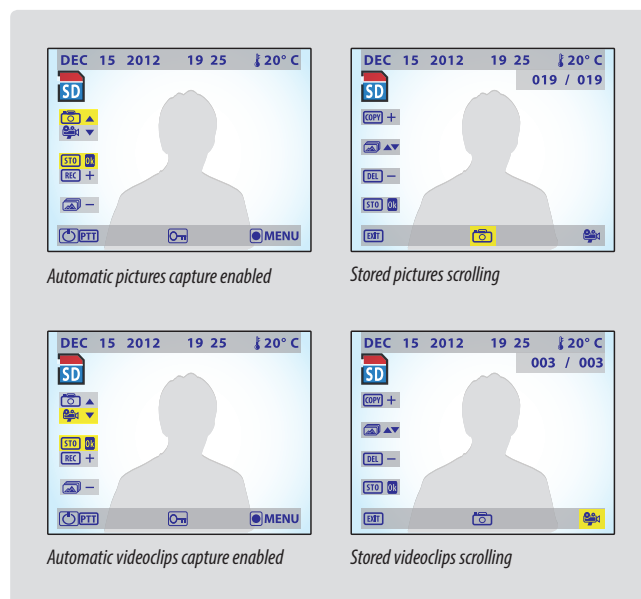
Videx is always looking to enhance the security level of its systems. For this reason Videx have added optional video memory functions to the KRISTALLO videophones range.

Videophones with memory board facility can store up to 128 still pictures and up to 66 video clips (15 seconds duration without audio). The images/videos are date and time stamped. It is also possible to copy these images to a microSD card (from 1 to 16Gb), allowing the pictures and videos to be viewed on a PC or any other device able to read the microSD card.

The picture or video clip storage can be triggered automatically or manually: when in automatic mode the videophone stores a picture or a 15 seconds video clip upon receiving a call (this enables the user, whilst away from home, to record visitors who have called, the date and time stamp allows you to see the time of the call). For manual storage the videophone stores a picture or a 15 seconds video clip by pressing the manual store button. Kristallo videophones with memory board have two additional OSD (On screen display) menus, one to manage the operation and the other to manage and scroll through the stored pictures and videos. The operation menu (always available when the videophone is switched on) offers: the option to store a picture or a video clip, to enable or disable automatic storing, to manual store and to enter into picture/video scrolling. The picture/video scrolling menu offers: the option to select pictures or videos, to scroll pictures or videos, to delete one or more pictures/videos and to copy the current viewed picture/video on to the microSD card.

When the internal memory of up to 128 pictures or 66 video clips is full, the next picture/video clip will delete the oldest (First-In-First-Out).

To order videophones with memory board facility (for those models where it is available), suffix "/MV" to the product code.



Art. 3.5" VIDEOPHONES FOR IP SYSTEM

KRV98 Kristallo design flush mount hands free IP videophone using a 3.5" LCD TFT High Definition display for IP based video door entry systems. All buttons use capacitive touch sensor technology, 3 of these buttons have direct functions such as "door-open", "answer/camera recall" and "privacy". 3 LED's give visual indication of operations while the other 5 buttons allow to surf the programming menus. A built in web server allows to set operation parameters and firmware update. Compatible with the SIP protocol, it can be connected with VOIP switchboard systems and as for VIDEX systems a self search/setting function is available for the Videx IP devices connected on the same network.

The unit can intercommunicate with other devices of the system (outdoor stations, videophones, tablet or PC with client installed) selecting the user to be contacted through a complete contacts' list or through "favorite" list (communication with outdoor stations is audio/video and it's possible to activate the relays); The videophone has an integrated picture memory facility with automatic or manual capture and the stored pictures can be viewed from the built-in history of events.

The Privacy function has a programmable activation time from 30 min to 24 h or unlimited, the melody and desktop can be customized by loading audio files and pictures and having an internet connection on the same network you also use the "Weather Forecast" function through the google weather service. A specific menu option allows to select and activate the relays of the outdoor stations without being called previously.

The Ethernet interface is a 10/100 Mbit and the required power supply is a 12Vdc 1A PSU or nothing when the videophone is connected to a PoE router or switch.

KRV96 As Art. KRV98 but surface mounting version with handset for conventional use in addition to the hands free mode.





Art. KRV778/B
Art. KRV788/B



Art. KRV778/W
Art. KRV788/W

Art. 7" VIDEO MONITOR FOR VX2200 DIGITAL SYSTEM

KRV778 Colour OSD TFT LCD 7" 800x480 pixel resolution intelligent Handsfree video intercom for the Videx VX2200 digital system. Touch capacitive buttons on specific areas of the display which vary depending to the operating mode selected or to the type of menu activated.
2 LED's* indicating the door open/close status (requires an additional cable) and the activation / deactivation of the privacy service.
An intercommunication facility is also available between devices in the same apartment (Same address). Additionally, the KRV line is equipped with a real-time clock, temperature sensor and a serial port for integration into home automation.
Programming and settings are available through the OSD menus.

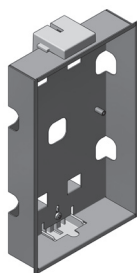
Art. 7" VIDEO MONITOR FOR VX2300 DIGITAL SYSTEM

KRV788 Colour OSD TFT LCD 7" 800x480 pixel resolution intelligent Handsfree video intercom for the Videx VX2300 digital system. Touch capacitive buttons on specific areas of the display which vary depending to the operating mode selected or to the type of menu activated.
2 LED's* indicating the door open/close status (required an additional cable) and the activation / deactivation of the privacy service.
An intercommunication facility is also available between devices in the same apartment (Same address) or in different apartments (different addresses). Additionally, the KRV line is equipped with a real-time clock, temperature sensor and a serial port for integration into home automation.
Programming and settings are available through the OSD menus.

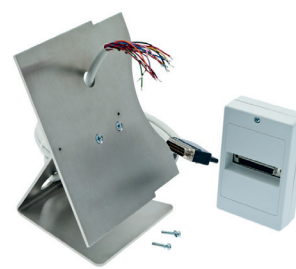
* Il funzionamento di alcuni LED può dipendere dal cablaggio: il funzionamento descritto si riferisce ad un cablaggio specifico e corretto.



Art. KRV981



Art. KRV983



Art. KRV931

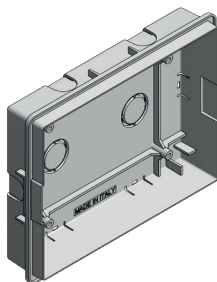
STAINLESS STEEL

Art. ACCESSORY FOR KRISTALLO 3.5" VIDEOPHONES

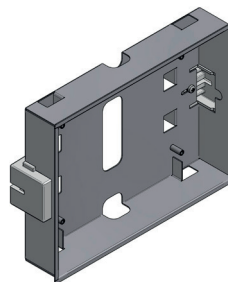
KRV981 Wall flush mounting box for Kristallo® Series videophones flush mounting version.

KRV983 Dry line wall flush mounting box for Kristallo® Series videophones flush mounting version.

KRV931 Table desktop kit for Kristallo® Series surface mounting videophones complete with cable and wall socket. It's made in 3 mm brushed stainless steel. Dimensions: 116 X 183 X 145 mm.



Art. KRV7981



Art. KRV7983

Art. ACCESSORY KRISTALLO 7" VIDEO MONITORS

KRV7981 Wall flush mounting box.

KRV7983 Dry line wall flush mounting box.